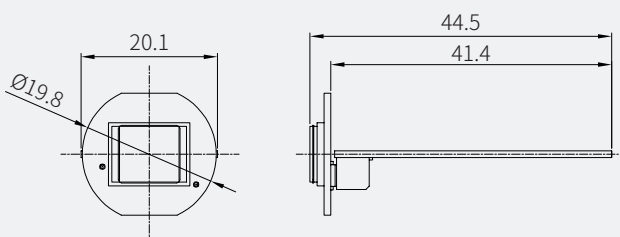
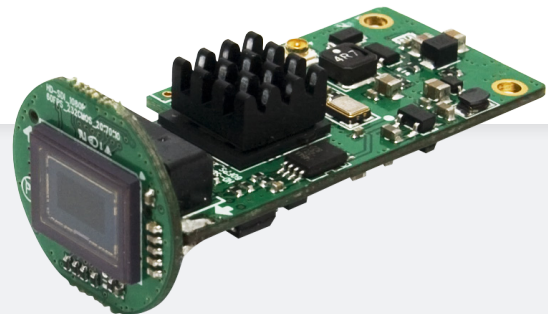


Camera Module

ACE-HDB232M

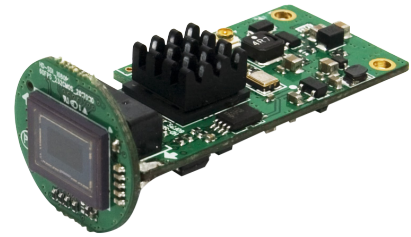
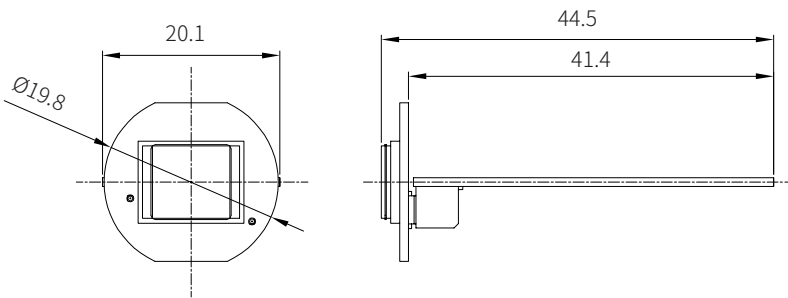
- 1/2.8" SONY EXMOR R Progressive Scan CMOS
- 1080p(1920x1080)@60(50)fps : only HD-SDI
- 1080p(1920x1080)@30(25)fps
- 3D DNR, Defog
- Bullet Module



Camera Module

ACE-HDB232M

Dimensions



Specifications

Image Sensor	1/2.8" Exmor R Progressive Scan CMOS	
Effective Pixels	2.13MP 1945(H) x 1097(V)	
Max. Video Resolution	HD-SDI/EX-SDI1.0	
	1080p@60fps(50fps): only HD-SDI	
	1080p@30fps(25fps)/720p@60fps(50fps)/	
	720p@30fps(25fps) TV out: CVBS NTSC/PAL	
Lens	Type	-
	Focal Length	-
	Angle of View	-
Min.Illumination	1.5Lux(30FPS)@F2.0 3.0Lux(60FPS)@F2.0	
IR LEDs	-	
IR Range	-	
White Balance	AUTO/Push/Manual	
Dynamic Range	WDR/BLC	OFF/BLC/HLC
	D-WDR	-
	Level	-
Electronic Shutter Speed	x32~x2(Low shutter), 1/30(25), 1/60(50)~1/30000	
Digital Slow Shutter(DSS)	OFF~64Fields	
Auto Gain Control(AGC)	LOW/MIDDLE/HIGH	
Day&Night	-	
Noise Deduction	3D-DNR(OFF/LOW/MIDDLE/HIGH)	
Motion Detection	OFF/ON(4 Zones)	
Privacy Mask	16 Zones	
Image Rotation	OFF/H-FLIP/V-FLIP/HV-FLIP	
Defog	Off/Low/Middle/High	
Sharpness	Adjustable(0~10)	
OSD control	ADKEY 1port	
Language	English,Japanese,Chinese,Chinese(S)	
Video Output mode	HD-SDI, EX-SDI1.0, CVBS	

General	
IP Rating	-
Operating Temperature	-10°C~+50°C
Storage Temperature	-20°C~+60°C
Dimension(mm)	Ø19.8 X 44.5mm
Weight	Approx. 5.7g
Power Source	12VDC(±10%)
Power Consumption	Max.180mA@12VDC