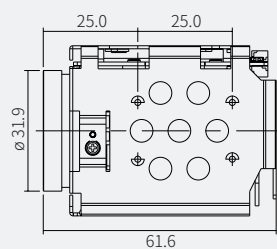
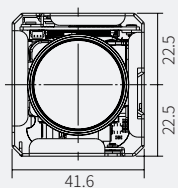


## Zoom Camera

# ATC-HZ5610C-TA

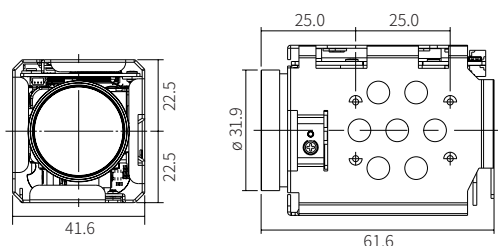
- 1/2.8" Progressive Scan CMOS
- 120x AF Zoom(10x optical zoom, 12x digital zoom)
- 1080p 30/25fps
- Mechanical Day&Night
- True WDR
- 3D DNR, Defog
- UART RS232-TTL(Pleco-D, Pelco C, VISCA, Hitachi)



# Zoom Camera

## ATC-HZ5610C-TA

### Dimensions



## Specifications

<b>Image Sensor</b>	1/2.8" Progressive Scan CMOS	
<b>Effective Pixels</b>	2.13MP 1945(H) x 1097(V)	
<b>Video Output mode</b>	TVI, AVI, CVBS	
<b>Max. Video Resolution</b>	TVI/AVI :1080p@30(25fps)	
<b>Synchronization system</b>	Internal	
<b>Min.Illumination</b>	Day mode: 0.1Lux(F1.6) Night mode: 0.07Lux(F1.6/ IR-cut filter on) DSS OFF, AGC45dB	
<b>S/N Rate</b>	More than 55dB(AGC off, DSS off)	
<b>Lens</b>	<b>Type</b>	AF Optical zoom lens(DC Iris), IR Corrective
	<b>Focal Length</b>	f=5.1mm~51mm
	<b>F-value</b>	F1.6(W)~1.8(T)
	<b>Angle of View</b>	Horizontal 54.0°(W)~4.9°(T), Vertical 31.0°(W)~4.0°(T)
<b>Zoom ratio</b>	Optical 10x / Digital 12x	
<b>Focus Min.Working Distance</b>	0.01m(Wide)/1m(Tele)~∞	
<b>Focus Control</b>	Auto/Interval/One Push/Manual/Preset	
<b>AE mode</b>	Auto/Shutter Priority/Iris Priority/AGC Priority/Manual	
<b>Brightness</b>	0~14	
<b>Manual Shutter</b>	1/1, 1/2, 1/4(3), 1/8(6), 1/15(12), 1/30(25), 1/60(50)~1/10000	
<b>Manual Iris</b>	F1.6~F32, Close	
<b>Sense-up</b>	Off~32fields	
<b>ETC</b>	Spot AE, Slow AE	
<b>D&amp;N Mode</b>	Auto/Day(Color)/Night(BW)/External-H or L	
<b>White Balance</b>	AUTO/One Push/Indoor/Outdoor/ATW/Manual	
<b>Image Freeze</b>	Off/On	
<b>Image Flip</b>	Off/Horizontal/Vertical/H+V(180° Flip)	
<b>Privacy Mask Zone</b>	8 Zones/14 mask color selectable	
<b>Digital Image Stabilization</b>	Yes	
<b>Motion Detection</b>	4 Zones	

<b>D-WDR</b>	Off/Low/Middle/High	
<b>WDR</b>	Off/On, Adjustable(Level:0~29, Contrast:0~5, Bright:0~19)	
<b>BLC</b>	Off/On, Area selectable	
<b>HLC</b>	Off/On, Area selectable	
<b>AGC</b>	Max.72dB	
<b>Sharpness</b>	Adjustable(0~15)	
<b>3D-DNR</b>	Off/Auto/Low/Middle/High	
<b>2D-DNR</b>	Off/Auto/Low/Middle/High	
<b>Defog</b>	Off/On/Auto	
<b>Preset Position</b>	256 position Presets(Zoom,Focus), 16Memory Presets, Custom Preset	
<b>Language</b>	English	
<b>UART</b>	<b>Remote</b>	RS232 TTL +5.0V(+3.3V compatible)
	<b>Protocol</b>	VISCA/Pelco-D/Pelco-P/Hitachi: Automatic detection
	<b>Baud rate</b>	2400/4800/9600/19200/38400/57600/115200bps
<b>UTC</b>	TVI/AVI-UTC	
<b>Supply Voltage</b>	12VDC(9V to 15VDC)	
<b>Power Consumption</b>	Max.4.4W / Non-working zoom&focus 2.7W	
<b>Dimension(mm)</b>	41.6x45x61.6mm	
<b>Weight</b>	Approx.124g	
<b>Operating Temperature</b>	-10°C~+50°C, Humidity(20~80%)	
<b>Storage Temperature</b>	-20°C~+60°C, Humidity(20~95%)	